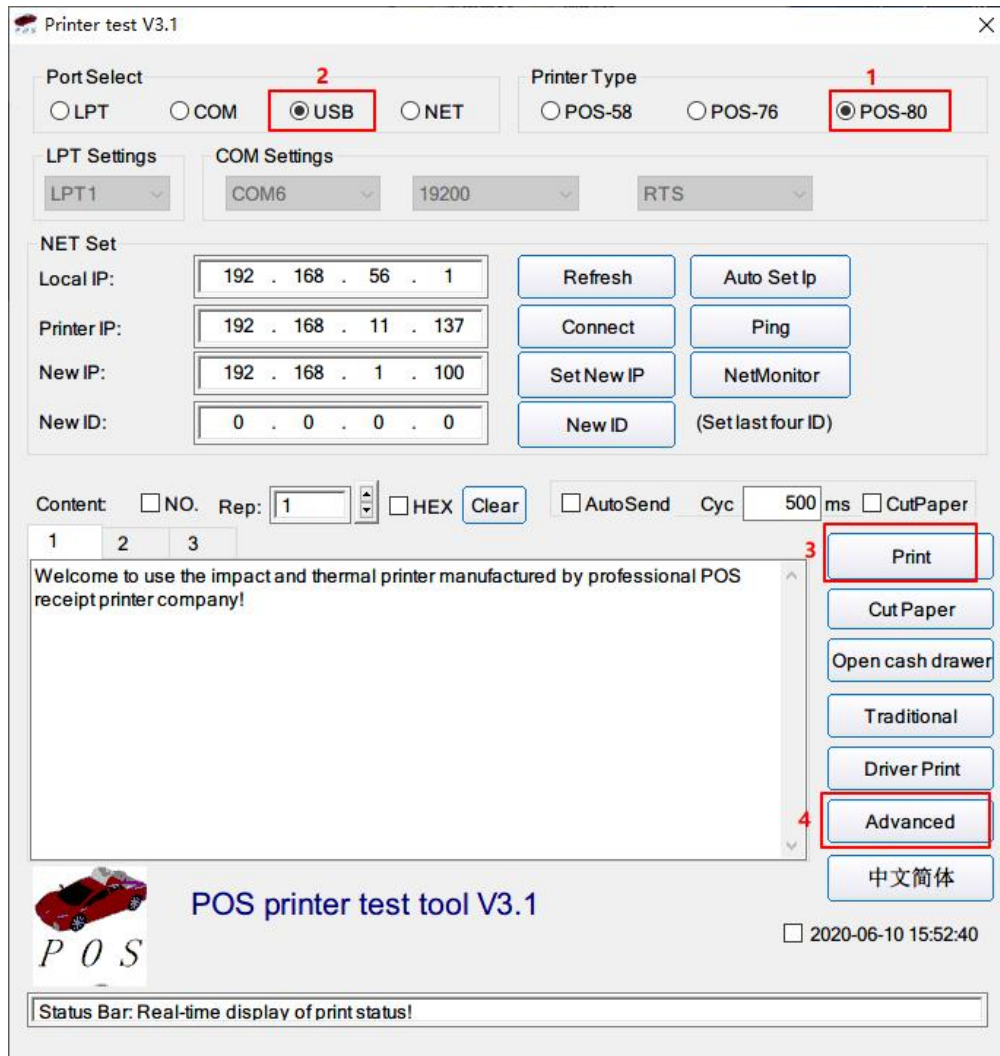


Settings of the Bluetooth Printer

1、Open the file—“PrinterTESTV3.1C” in the folder named as “Tools” in the optical disk.

Then start Printer software and follow the steps to set the printer. See the picture followed.



“1” Choose Printer Type: “POS-80”

“2” Choose “USB” Port

“3” Click the “Print” to test whether the printer is working.

“4” After doing the above settings, the printer is tested to be working. Then click the “Advanced”, and the corresponding window could be popped up.

2、Click the “Advanced”. Then the corresponding window is popped up. See the picture:

The 'Advanced' settings window contains the following sections and controls:

- H Parameter Settings:** Print H, Set Delta (5), dropdown.
- Code page Settings:** PrintCodePage, SetCodePage (0), dropdown.
- NV Logo Test:** NV Download (1c 70), NV Download (1d 28).
- Barcode Printing test:** Print BarCode, UPC_A (dropdown), 129 (dropdown), Height.
- P76 Buzzer Settings:** Set Buzzer, OFF (dropdown).
- P76 Density Settings:** Set, NORMAL (dropdown).
- P80 Black sens:** Set Sensitivity, 12 (dropdown), 12 (dropdown), ☐ SensH.
- baud rate settings:** Set BaudRate, 19200 (dropdown), (Only P58 and P76E).
- DIP Settings:** Set P58 DIP, Set P80 DIP, Set P76 DIP.
- 2D Barcode test:** Print 2D Barcode.
- Net Settings:** Set Net, Set Bluetooth (highlighted with a red rectangle).
- USB MODE Settings:** USB Printing, Virtual COM.
- Black Mark Settings:** Set 80 BlackMark, Set 76 BlackMark.
- File data send:** Open File send.
- Cut With Beep:** Cut With Beep Set, dropdown.
- InputBox Codepage:** 866 - Cyrillic(DOS) (dropdown), SET.

3、Click the “Bluetooth Set”, and follow the steps to set up the Bluetooth information. See the following pictures:

The 'Bluetooth Settings' window contains the following sections and controls:

- settings:** A section highlighted with a red rectangle containing:
 - BT NAME:** Printer001 1 (text field with a red '1' next to it), ☒
 - BT PINKEY:** 123456 2 (text field with a red '2' next to it), ☒
- BT USER:** ☐
- Set:** A button highlighted with a red rectangle and a red '3' next to it.

“1” Set up the Port name of the Bluetooth Printer (the Factory Default BT NAME is “Printer001”)

“2” Set up the Password of the Bluetooth Printer (the Factory Default BT PINKEY is “123456”)

“3” After doing the above settings, click “ **Set** ”, and then finished the settings of Bluetooth printer Parameters.

More specific details please refer to “Wireless Thermal Receipt Printer (User Manual)”.